

JH-M10DS144C 575~595W

N-22.84% Efficiency

575~595W (182x182 mm Half-Cut Cell) 144 pcs

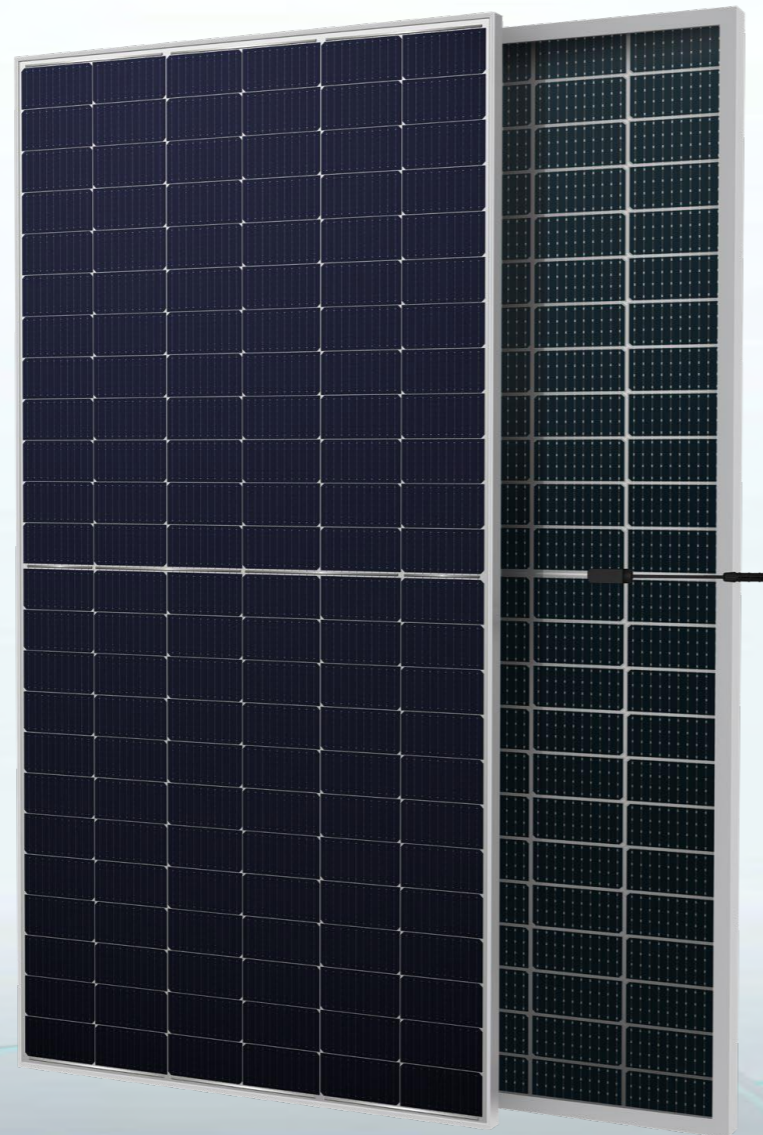
N-TYPE Bifacial Silver Frame



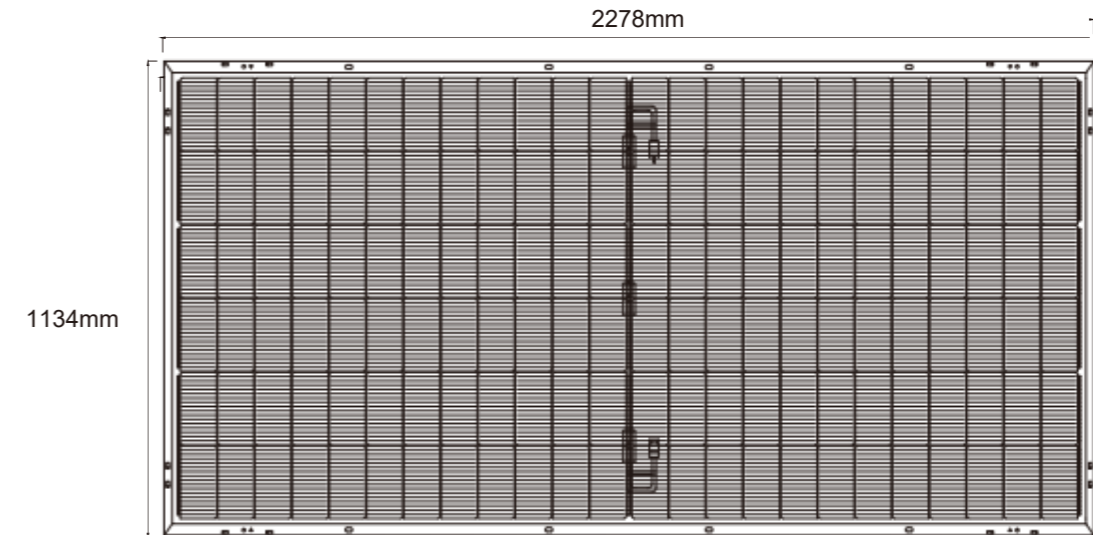
Dimension: 2278 mm x 1134mm x 30 mm

Weight: 31.7 kg

N



Product Appearance



Electrical parameters at Standard Test Conditions (STC*) & Nominal Operating Cell Temperature (NOCT*)

Module Type	575W / 436W	580W / 440W	585W / 444W	590W / 448W	595W / 452W
Test Environment	STC / NOCT	STC / NOCT	STC / NOCT	STC / NOCT	STC / NOCT
Power output tolerances Pmax(W)	(0,+5)	(0,+5)	(0,+5)	(0,+5)	(0,+5)
Module efficiency(%)	22.26	22.45	22.65	22.84	23.03
Voltage at Pmax Vmpp(V)	43.73 / 40.75	43.88 / 40.93	44.02 / 41.11	44.16 / 41.29	44.30 / 41.47
Current at Pmax Imp(A)	13.15 / 10.70	13.22 / 10.75	13.29 / 10.80	13.36 / 10.85	13.43 / 10.90
Open-circuit voltage Vco(V)	50.75 / 49.59	52.95 / 49.77	53.15 / 49.96	53.35 / 50.15	53.55 / 50.34
Short-circuit current Ico(A)	13.89 / 11.33	13.95 / 11.38	14.01 / 11.43	14.07 / 11.48	14.13 / 11.55

*STC: 1000 W·m⁻² irradiance, 25°C cell temperature, AM 1.5 spectrum according to EN 60904-
 *NOCT: open-circuit module operation temperature at 800 W·m⁻² irradiance, 20°C ambient temperature, 1 m·s⁻¹ wind speed.

GENERAL CHARACTERISTICS

Dimensions (L / W / H)	2278 mm / 1134mm / 30 mm
Weight	31.7kg

PACKAGING SPECIFICATIONS

Number of modules per pallet	36
Number of pallets per 40' container	20
Pieces per Container	720

THERMAL CHARACTERISTICS

Nominal operating cell temperature NOCT	°C	45 ± 2
Temperature coefficient of Pmax	% / °C	-0.29
Temperature coefficient of Voc	% / °C	-0.25
Temperature coefficient of Isc	% / °C	0.045

*NOCT: open-circuit module operation temperature at 800 W·m⁻² irradiance, 20°C ambient temperature, 1 m·s⁻¹ wind speed.

OPERATING CONDITIONS

Max. system voltage	1500 VDC
Max. series fuse rating*	30 A
Operating temperature range	- 40°C to 85°C
Max. static load, front (e.g., snow)	5400 Pa
Max. static load, back (e.g., wind)	2400 Pa
Max. hailstone impact (diameter/velocity)	25 mm / 23 m·s ⁻¹

*DO NOT CONNECT FUSE IN COMBINER BOX WITH TWO OR MORE STRINGS IN PARALLEL CONNECTION.

CONSTRUCTION MATERIALS

Cell (material / quantity)	monocrystalline silicon / 6 x 24
Glass (material / thickness)	low-iron tempered glass / 2+2 mm
Frame (material)	anodized aluminum alloy
Junction box (type / protection degree)	3 bypass diodes / ≥ IP68
Cable (length / cross-sectional area)	± 300 mm or customized length / 4 mm ²